



MERCEDES/BERK *private real estate*

120 ELEVENTH AVENUE # 2B

Chelsea

DETAILS:

Type:	Condo
Price:	\$2,600,000
Maint/CC:	\$1,514
Taxes:	\$4,511
Est.Sq. Ft.:	4,017
Bedrooms:	3
Baths:	3

DESCRIPTION:

OFFERED AS A WHITE CANVAS

Expansive 4,017 square foot loft with open volumes of space that are unmatched in the city. Features hardwood floors, oversized windows and high ceilings. Can accommodate three bedrooms plus home office.

Located at the crossroads of the High Line, Meatpacking, and Chelsea art districts. Steps to Chelsea Piers, Hudson River Park, the city's top restaurants, and Chelsea Market. West Chelsea is filled with vibrant personality, culture and class, art and amenities. Trendy and tasteful, it is the ultimate collage of city life. The Lifesaver Lofts at 120 Eleventh Avenue is located in the center of this exciting riverfront neighborhood.

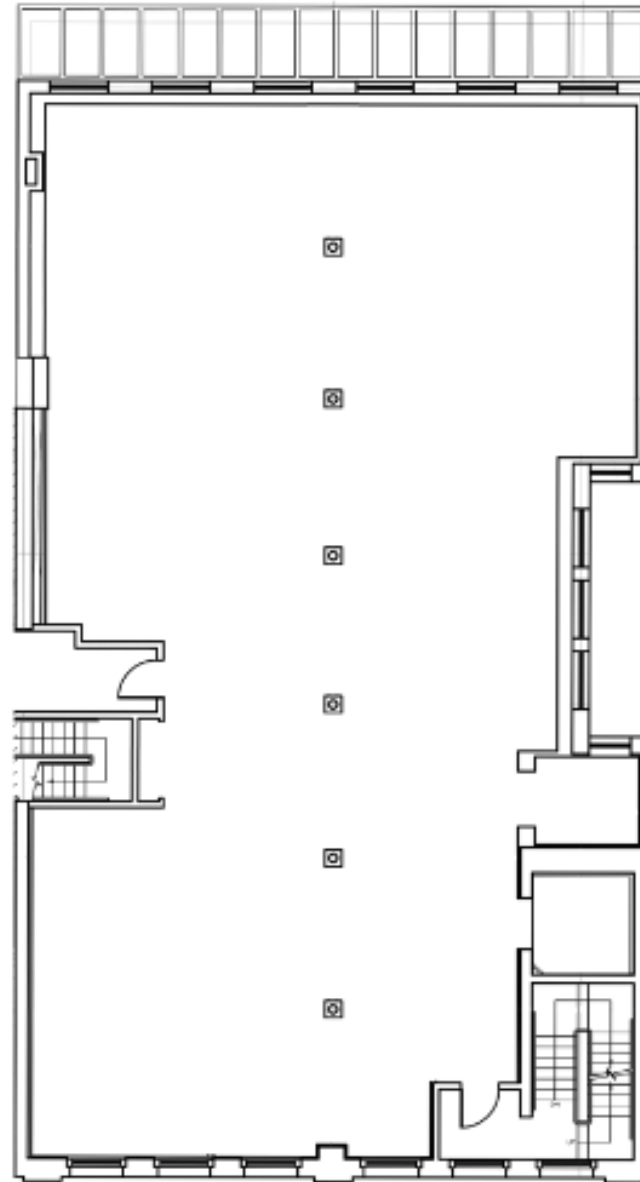
CONTACT:

Liz Omedes

P: 212.452.3070 x 201 | C: 917.371.0075 | E: liz@mercedesberk.com

Kevin Reardon

P: 212.452.3070 x 202 | C: 917.488.6117 | E: kevin@mercedesberk.com



Mercedes/Berk LTD. | 783 Madison Avenue - 3rd Floor – New York, NY 10065 | 212.452.3070 | 212.452.3074 | mercedesberk.com

Sponsor: Puissance Enterprises, LLC, 450 West 15th Street, Ste 700, New York, NY 10011. Property address: 120-126 Eleventh Avenue, New York, NY 10011. This is not an offering. The complete offering terms are in an Offering Plan available from the Sponsor. File #CD08-0600. All specifications, finishes, materials, and other construction details are subject to change. Square footage is approximate. Equal housing opportunity. Photo depicts finishes for certain units that may or may not be in all units.