



MERCEDES/BERK *private real estate*

## 300 E 62<sup>ND</sup> STREET

The Paladin at Second Avenue

### DETAILS:

- Type:** Condo  
**Price:** \$379,000  
**CC:** \$448.33 + \$226.23 assessment until July 31, 2012  
**Taxes:** \$414 (approx)  
**Sq. Ft.:** 366 approx  
**Rooms:** 2  
**Bedrooms:** Studio  
**Baths:** 1  
**Neighborhood:** Upper East Side  
**Pets Policy:** Pets Allowed
- Full-time Doorman
  - Laundry Room
  - Bike Room
  - Storage Room

### CONTACT:

**Liz Omedes**

C: 917.371.0075 | E: [liz@mercedesberk.com](mailto:liz@mercedesberk.com)



### DESCRIPTION:

Beautiful modern studio that is centrally located in the Upper East Side. This virtually untouched apartment faces the East side and is ready to be moved into. Perfect for Pied-a-terre & Investment. Kitchen appliances in good condition, marble bath and full service. Doorman building, central AC, storage available for lease, bike room. Near all transportation, great restaurants, movie theatres, have it all...!!

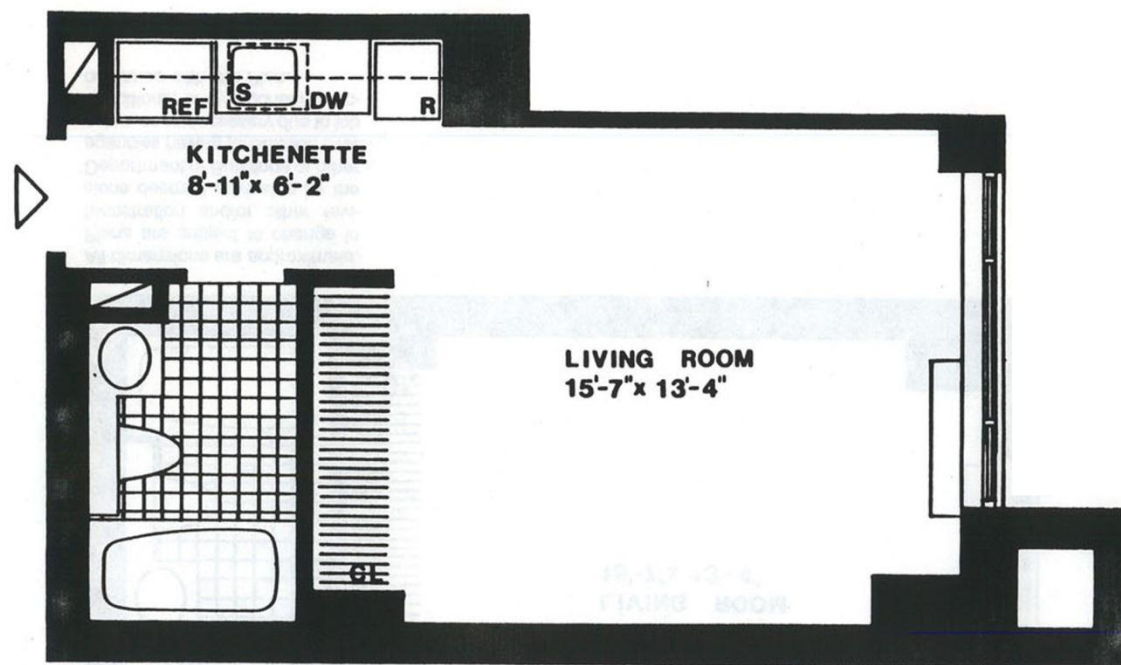
Mercedes/Berk LTD. | 783 Madison Avenue - 3rd Floor – New York, NY 10065 | 212.452.3070 | 212.452.3074 | [mercedesberk.com](http://mercedesberk.com)

All information furnished regarding property for sale, rental or financing is from sources deemed reliable, but no warranty or representation is made as to the accuracy thereof and same is submitted subject to errors, omissions, change of price, rental or other conditions, prior sale, lease or financing or withdrawal without notice. All dimensions are approximate. For exact dimensions, you must hire your own architect or engineer.



MERCEDES/BERK *private real estate*

300 East 62nd Street - Apt. 805



Mercedes/Berk LTD. | 783 Madison Avenue - 3rd Floor – New York, NY 10065 | 212.452.3070 | 212.452.3074 | mercedesberk.com

All information furnished regarding property for sale, rental or financing is from sources deemed reliable, but no warranty or representation is made as to the accuracy thereof and same is submitted subject to errors, omissions, change of price, rental or other conditions, prior sale, lease or financing or withdrawal without notice. All dimensions are approximate. For exact dimensions, you must hire your own architect or engineer.